

VANITIES | FAUCETS | SHOWER DOORS | MIRRORS | LIGHTING | TOILETS



# IKOU COLLECTION

# TABLE OF CONTENTS



02  
VANITIES

ART BATHE | 02  
STUDIO BATHE | SPA BATHE | 12  
URBAN BATHE | 30

**IKOU INC. IS A LEADING NORTH AMERICAN MANUFACTURER AND PURVEYOR OF PREMIUM BATHROOM LIFESTYLE PRODUCTS.** IKOU'S OFFERINGS ARE SLEEK, MODERN, AND EXPERTLY CONSTRUCTED WITH METICULOUS ATTENTION TO DETAIL AND RIGOROUS QUALITY CONTROL. IKOU'S ECO-CONSCIOUS IDEOLOGY IS INFUSED IN EVERY ELEMENT OF THE PROCESS, FROM ETHICALLY SOURCED AND ENVIRONMENTALLY FRIENDLY MATERIALS TO SUPPLY CHAIN PARTNERS AND PACKAGING.

42  
FAUCETS



48  
MIRRORS

50  
LIGHTING



46  
SHOWER  
DOORS



52  
TOILETS

# ART BATHE COLLECTION

## VANITIES

OUR COLLECTION OF LUXURIOUS AND DESIGNER-INSPIRED PIECES THAT WILL WITHSTAND THE TEST OF TIME. PIECES IN THE COLLECTION ARE HAND-CRAFTED USING THE FINEST MATERIALS WITH EUROPEAN-INSPIRED FINISHES. ART BATHE BOASTS FUNCTIONALITY WHILE MAKING A STATEMENT IN YOUR HOME.







# AVENUE

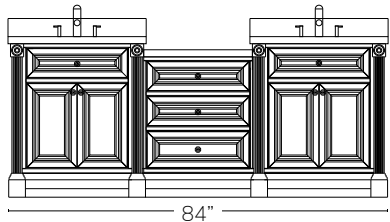
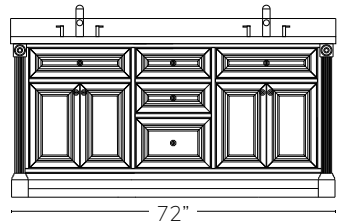
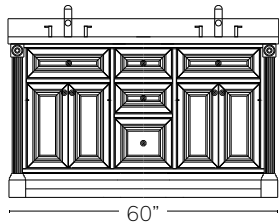
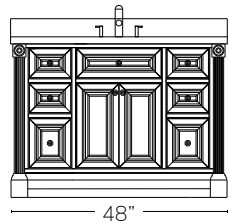
SHOWN IN VINTAGE OAK | MATTE BLACK | 60" MODEL

**FEATURES**

- SOLID HARDWOOD FRAME FOR DURABILITY
- BLUM BLUMOTION® SOFT-CLOSING DRAWER GLIDES
- SOFT-CLOSING CABINET DOORS
- REMOVABLE DRAWER ORGANIZER
- TIP-OUT DRAWER
- ADJUSTABLE SHELF AND LEGS
- COUNTERTOP PRE-DRILLED FOR 8" SPREAD FAUCET
- TWO POWER OUTLETS AND TWO USB PORTS
- PRE-ASSEMBLED VANITY

**SIZE OPTIONS**

HEIGHT 35 1/2" | DEPTH 22"

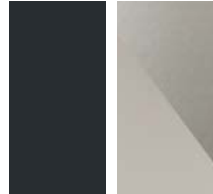


**FINISHES**



FRENCH GREY    WHITE OAK    VINTAGE OAK    WHITE

**HARDWARE**



MATTE BLACK    POLISHED NICKEL/ BRUSHED NICKEL (DUAL TONE)

**COUNTERTOP**



DIAMOND QUARTZ



# AURORA

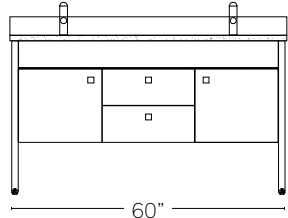
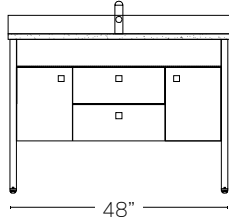
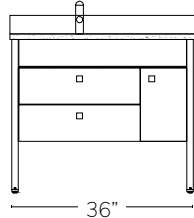
SHOWN IN ESPRESSO OAK | BRUSHED GOLD | 48" MODEL

**FEATURES**

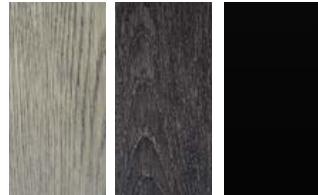
- SOLID HARDWOOD FRAME FOR DURABILITY
- BLUM BLUMOTION® SOFT-CLOSING DRAWER GLIDES
- EUROPEAN SOFT-CLOSING CABINET DOORS
- ADJUSTABLE SHELF AND LEGS
- COUNTERTOP PRE-DRILLED FOR SINGLE HOLE FAUCET
- PRE-ASSEMBLED VANITY

**SIZE OPTIONS**

HEIGHT 34 3/4" | DEPTH 22"

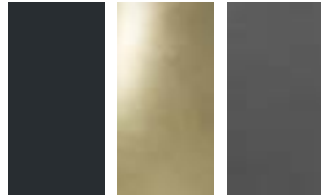


**FINISHES**



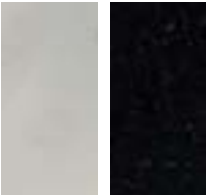
FRENCH GREY   ESPRESSO OAK   HIGH GLOSS BLACK

**HARDWARE**



MATTE BLACK   BRUSHED GOLD   GUNMETAL GREY

**COUNTERTOP**



DIAMOND QUARTZ   ANTIQUE BLACK



# EVERETT

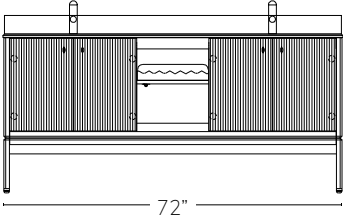
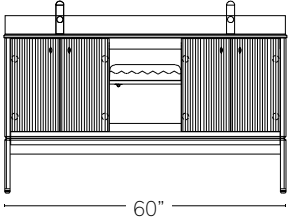
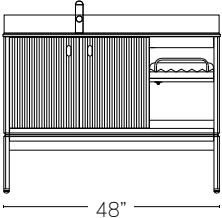
SHOWN IN ESPRESSO OAK | BRUSHED GOLD | 48" MODEL

**FEATURES**

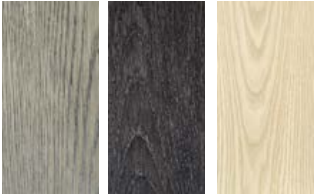
- SOLID HARDWOOD FRAME FOR DURABILITY
- BLUM BLUMOTION® SOFT-CLOSING DRAWER GLIDES
- EUROPEAN SOFT-CLOSING CABINET DOORS
- STAINLESS STEEL STORAGE SHELF
- COUNTERTOP PRE-DRILLED FOR SINGLE HOLE FAUCET
- PRE-ASSEMBLED VANITY

**SIZE OPTIONS**

HEIGHT 34 3/4" | DEPTH 22"

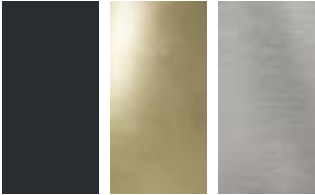


**FINISHES**



FRENCH GREY   ESPRESSO OAK   WHITE OAK

**HARDWARE**



MATTE BLACK   BRUSHED GOLD   BRUSHED NICKEL

**COUNTERTOP**



DIAMOND QUARTZ



# SIENNA

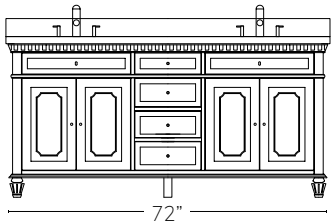
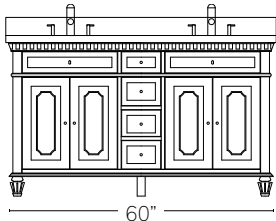
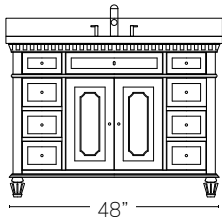
SHOWN IN FRENCH GREY | MATTE BLACK | 60" MODEL

**FEATURES**

- SOLID HARDWOOD FRAME FOR DURABILITY
- BLUM BLUMOTION® SOFT-CLOSING DRAWER GLIDES
- EUROPEAN SOFT-CLOSING CABINET DOORS
- REMOVABLE DRAWER ORGANIZER
- ADJUSTABLE SHELF AND LEGS
- COUNTERTOP PRE-DRILLED FOR 8" SPREAD FAUCET
- PRE-ASSEMBLED VANITY

**SIZE OPTIONS**

HEIGHT 34 3/4" | DEPTH 22"

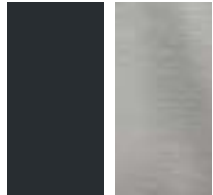


**FINISHES**



FRENCH GREY    WHITE    VINTAGE OAK

**HARDWARE**



MATTE BLACK    BRUSHED NICKEL

**COUNTERTOP**



DIAMOND QUARTZ



# STUDIO BATHE | SPA BATHE COLLECTION

## VANITIES

CHIC AND ELEGANT, THE STUDIO BATHE | SPA BATHE COLLECTION CATERS TO YOUR NEEDS. AVAILABLE IN A WIDE RANGE OF FINISHES AND SIZES WITH DURABLE QUARTZ COUNTERTOPS AND AN ARRAY OF FEATURES FOR UTMOST CONVENIENCE, INCLUDING USB PORTS, DRAWER ORGANIZERS, AND SOFT-CLOSING DOORS.







# CALAIS

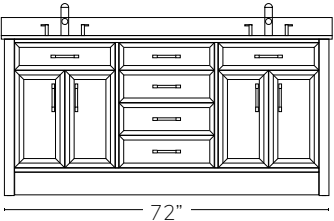
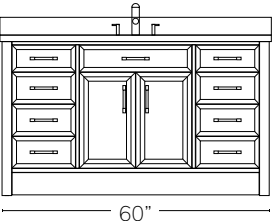
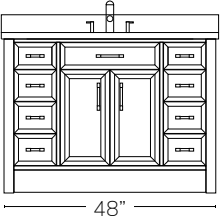
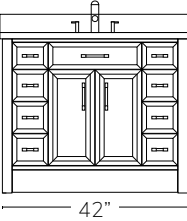
SHOWN IN VINTAGE OAK | MATTE BLACK | 48" MODEL

**FEATURES**

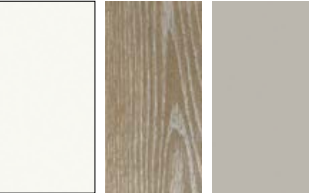
- PATENTED FOLDABLE KICKPLATES FOR VERSATILE LOOK
- SOLID HARDWOOD FRAME FOR DURABILITY
- BLUM BLUMOTION® SOFT-CLOSING DRAWER GLIDES
- SOFT-CLOSING CABINET DOORS
- REMOVABLE DRAWER ORGANIZER
- TIP-OUT DRAWER
- ADJUSTABLE SHELF AND LEGS
- COUNTERTOP PRE-DRILLED FOR 8" SPREAD FAUCET
- TWO POWER OUTLETS AND TWO USB PORTS
- PRE-ASSEMBLED VANITY

**SIZE OPTIONS**

HEIGHT 35 1/2" | DEPTH 22"

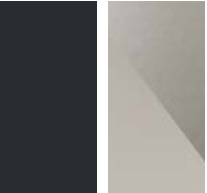


**FINISHES**



WHITE VINTAGE OAK WARM GREY

**HARDWARE**



MATTE BLACK POLISHED NICKEL/ BRUSHED NICKEL (DUAL TONE)

**COUNTERTOP**



QUARTZ



# KATIE

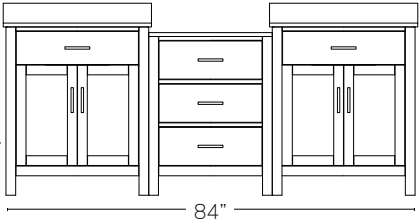
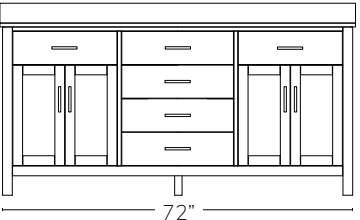
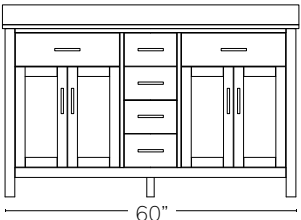
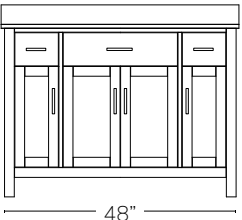
SHOWN IN WHITE OAK | POLISHED CHROME | 48" MODEL

**FEATURES**

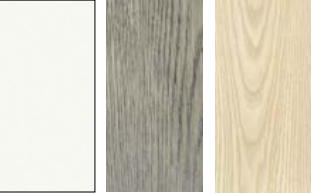
- SOLID HARDWOOD FRAME FOR DURABILITY
- BLUM BLUMOTION® SOFT-CLOSING DRAWER GLIDES
- SOFT-CLOSING CABINET DOORS
- REMOVABLE DRAWER ORGANIZER
- TIP-OUT DRAWER
- ADJUSTABLE SHELF AND LEGS
- COUNTERTOP PRE-DRILLED FOR SINGLE HOLE FAUCET
- TWO POWER OUTLETS AND TWO USB PORTS
- PRE-ASSEMBLED VANITY

**SIZE OPTIONS**

HEIGHT 34 3/4" | DEPTH 22"



**FINISHES**



WHITE FRENCH GREY WHITE OAK

**HARDWARE**



MATTE BLACK POLISHED CHROME

**COUNTERTOP**



QUARTZ



# THOMSON

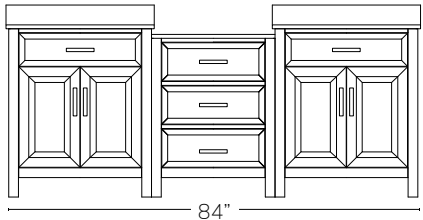
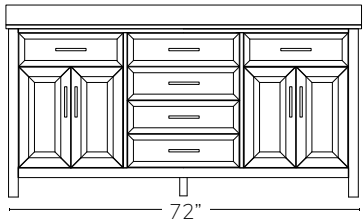
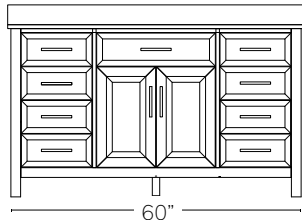
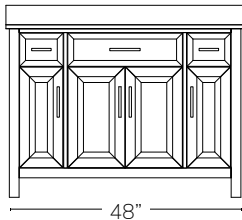
SHOWN IN WARM GREY | POLISHED CHROME | 84" MODEL

**FEATURES**

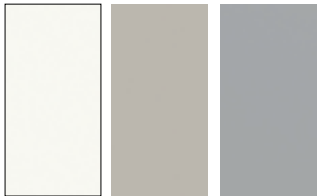
- SOLID HARDWOOD FRAME FOR DURABILITY
- BLUM BLUMOTION® SOFT-CLOSING DRAWER GLIDES
- SOFT-CLOSING CABINET DOORS
- REMOVABLE DRAWER ORGANIZER
- TIP-OUT DRAWER
- ADJUSTABLE SHELF AND LEGS
- COUNTERTOP PRE-DRILLED FOR SINGLE HOLE FAUCET
- TWO POWER OUTLETS AND TWO USB PORTS
- PRE-ASSEMBLED VANITY

**SIZE OPTIONS**

HEIGHT 34 3/4" | DEPTH 22"

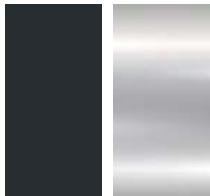


**FINISHES**



WHITE    WARM GREY    OXFORD GREY

**HARDWARE**



MATTE BLACK    POLISHED CHROME

**COUNTERTOP**



QUARTZ





# HUDSON

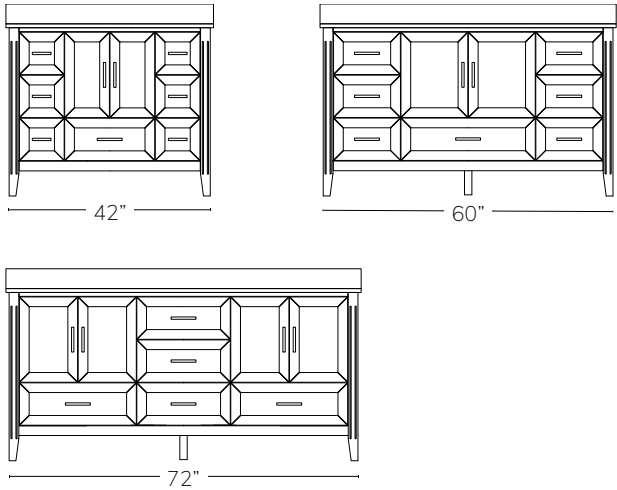
SHOWN IN OXFORD GREY | MATTE BLACK | 60" MODEL

**FEATURES**

- SOLID HARDWOOD FRAME FOR DURABILITY
- BLUM BLUMOTION® SOFT-CLOSING DRAWER GLIDES
- SOFT-CLOSING CABINET DOORS
- REMOVABLE DRAWER ORGANIZER
- ADJUSTABLE SHELF AND LEGS
- COUNTERTOP PRE-DRILLED FOR SINGLE HOLE FAUCET
- TWO POWER OUTLETS AND TWO USB PORTS
- PRE-ASSEMBLED VANITY

**SIZE OPTIONS**

HEIGHT 34 3/4" | DEPTH 22"



**FINISHES**



WHITE OXFORD GREY ESPRESSO

**HARDWARE**



MATTE BLACK POLISHED CHROME

**COUNTERTOP**



QUARTZ



# VAUGHAN

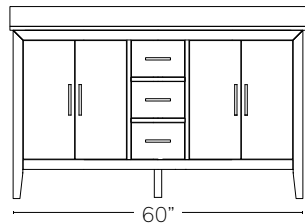
SHOWN IN ESPRESSO OAK | POLISHED CHROME | 60" MODEL

**FEATURES**

- SOLID HARDWOOD FRAME FOR DURABILITY
- BLUM BLUMOTION® SOFT-CLOSING DRAWER GLIDES
- SOFT-CLOSING CABINET DOORS
- REMOVABLE DRAWER ORGANIZER
- ADJUSTABLE SHELF AND LEGS
- COUNTERTOP PRE-DRILLED FOR SINGLE HOLE FAUCET
- TWO POWER OUTLETS AND TWO USB PORTS
- PRE-ASSEMBLED VANITY

**SIZE OPTIONS**

HEIGHT 34 ¾" | DEPTH 22"



**FINISHES**



WHITE OAK    ESPRESSO OAK

**HARDWARE**



MATTE BLACK    POLISHED CHROME

**COUNTERTOP**



QUARTZ





# BROOKLYN

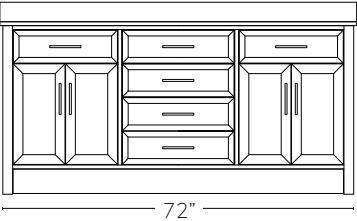
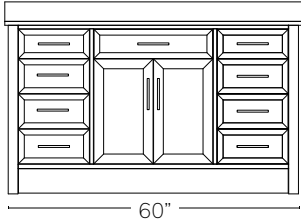
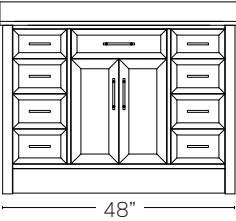
SHOWN IN WHITE | MATTE BLACK | 60" MODEL

**FEATURES**

- PATENTED FOLDABLE KICKPLATES FOR VERSATILE LOOK
- SOLID HARDWOOD FRAME FOR DURABILITY
- BLUM BLUMOTION® SOFT-CLOSING DRAWER GLIDES
- SOFT-CLOSING CABINET DOORS
- REMOVABLE DRAWER ORGANIZER
- TIP-OUT DRAWER
- ADJUSTABLE SHELF AND LEGS
- COUNTERTOP PRE-DRILLED FOR SINGLE HOLE FAUCET
- TWO POWER OUTLETS AND TWO USB PORTS
- PRE-ASSEMBLED VANITY

**SIZE OPTIONS**

HEIGHT 34 ¾" | DEPTH 22"



**FINISHES**



WHITE WARM GREY

**HARDWARE**



MATTE BLACK POLISHED CHROME

**COUNTERTOP**



QUARTZ





# HARLOWE

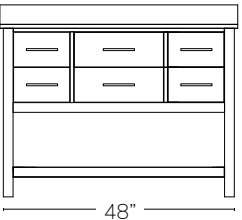
SHOWN IN FRENCH GREY | MATTE BLACK | 60" MODEL

**FEATURES**

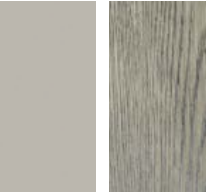
- SOLID HARDWOOD FRAME FOR DURABILITY
- BLUM BLUMOTION® SOFT-CLOSING DRAWER GLIDES
- SOFT-CLOSING CABINET DOORS
- REMOVABLE DRAWER ORGANIZER
- TIP-OUT DRAWER
- ADJUSTABLE SHELF AND LEGS
- COUNTERTOP PRE-DRILLED FOR SINGLE HOLE FAUCET
- TWO POWER OUTLETS AND TWO USB PORTS
- PRE-ASSEMBLED VANITY

**SIZE OPTIONS**

HEIGHT 34 3/4" | DEPTH 22"

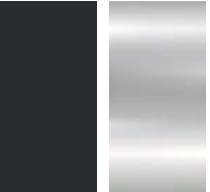


**FINISHES**



WARM GREY FRENCH GREY

**HARDWARE**



MATTE BLACK POLISHED CHROME

**COUNTERTOP**



QUARTZ



# KERRINGTON

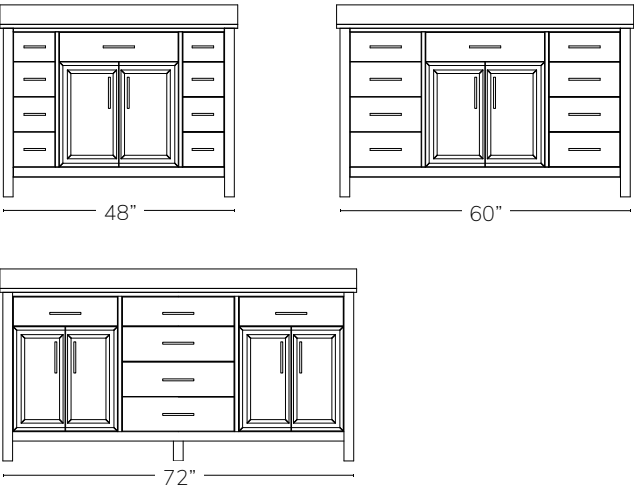
SHOWN IN WARM GREY | MATTE BLACK | 72" MODEL

**FEATURES**

- SOLID HARDWOOD FRAME FOR DURABILITY
- BLUM BLUMOTION® SOFT-CLOSING DRAWER GLIDES
- SOFT-CLOSING CABINET DOORS
- REMOVABLE DRAWER ORGANIZER
- TIP-OUT DRAWER
- ADJUSTABLE SHELF AND LEGS
- COUNTERTOP PRE-DRILLED FOR SINGLE HOLE FAUCET
- TWO POWER OUTLETS AND TWO USB PORTS
- PRE-ASSEMBLED VANITY

**SIZE OPTIONS**

HEIGHT 34 3/4" | DEPTH 22"



**FINISHES**



WHITE WARM GREY

**HARDWARE**



MATTE BLACK POLISHED CHROME

**COUNTERTOP**



QUARTZ



# URBAN BATHE COLLECTION

## VANITIES

THE URBAN BATHE COLLECTION IS CLEAN, CLASSIC, AND FUNCTIONAL. ON-TREND OFFERINGS COME FULLY PRE-ASSEMBLED FOR TURNKEY USE, WITH UNIQUE FEATURES SUCH AS BUILT-IN DRAWER ORGANIZERS AND SOFT-CLOSING CABINET DOORS WITH REVERSIBLE PANELS.



**EXCLUSIVE FEATURE! BI-LEVEL DRAWER ORGANIZERS THAT SLIDE BACK AND FORTH FOR CONVENIENCE AND EXTRA STORAGE.**







# WINDSOR

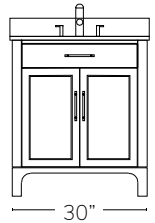
SHOWN IN WARM GREY | POLISHED CHROME | 30" MODEL

### FEATURES

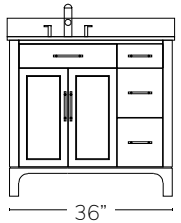
- SOLID HARDWOOD FRAME FOR DURABILITY
- SOFT-CLOSING DRAWER GLIDES
- SOFT-CLOSING CABINET DOORS WITH REVERSIBLE PANELS (FOR TWO DIFFERENT LOOKS)
- EXCLUSIVE-TO-IKOU BUILT-IN DRAWER ORGANIZER
- ADJUSTABLE FEET
- COUNTERTOP PRE-DRILLED FOR 8" WIDESPREAD FAUCET
- PRE-ASSEMBLED VANITY

### SIZE OPTIONS

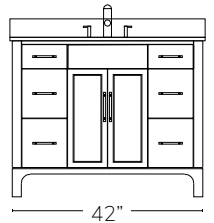
HEIGHT 34 3/4" | DEPTH 22"



30"

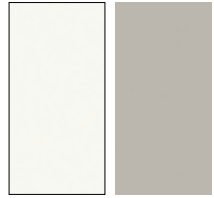


36"



42"

### FINISHES



WHITE

WARM GREY

### HARDWARE



POLISHED CHROME

### COUNTERTOP



ENGINEERED STONE



# CARSON

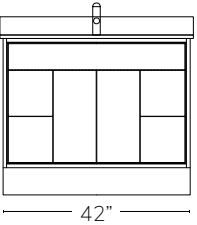
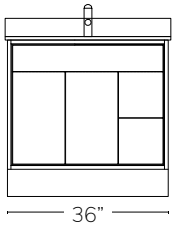
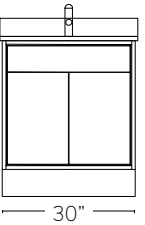
SHOWN IN WHITE | MATTE BLACK | 42" MODEL

### FEATURES

- SOLID HARDWOOD FRAME FOR DURABILITY
- SOFT-CLOSING DRAWER GLIDES
- SOFT-CLOSING CABINET DOORS
- REMOVABLE DRAWER ORGANIZER
- ADJUSTABLE SHELF AND LEGS
- COUNTERTOP PRE-DRILLED FOR SINGLE HOLE FAUCET
- PRE-ASSEMBLED VANITY

### SIZE OPTIONS

HEIGHT 34 3/4" | DEPTH 22"



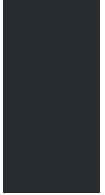
### FINISHES



WHITE

WARM  
GREY

### HARDWARE



MATTE  
BLACK

### COUNTERTOP



ENGINEERED STONE



# JAMES

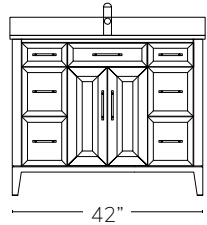
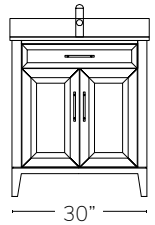
SHOWN IN WARM GREY | POLISHED CHROME | 30" MODEL

### FEATURES

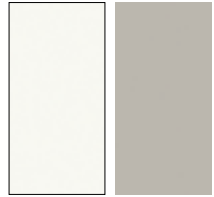
- SOLID HARDWOOD FRAME FOR DURABILITY
- SOFT-CLOSING DRAWER GLIDES
- SOFT-CLOSING CABINET DOORS
- EXCLUSIVE-TO-IKOU BUILT-IN DRAWER ORGANIZER
- ADJUSTABLE FEET
- COUNTERTOP PRE-DRILLED FOR SINGLE HOLE FAUCET
- PRE-ASSEMBLED VANITY

### SIZE OPTIONS

HEIGHT 34 3/4" | DEPTH 22"



### FINISHES



WHITE

WARM  
GREY

### HARDWARE



POLISHED  
CHROME

### COUNTERTOP



ENGINEERED STONE





# WARDEN

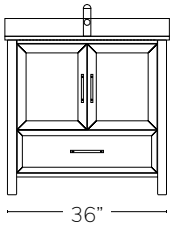
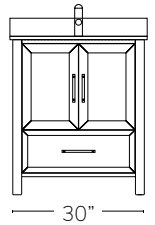
SHOWN IN ESPRESSO OAK | POLISHED CHROME | 36" MODEL

### FEATURES

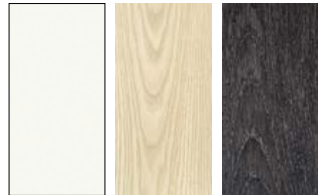
- SOLID HARDWOOD FRAME FOR DURABILITY
- SOFT-CLOSING DRAWER GLIDES
- SOFT-CLOSING CABINET DOORS
- EXCLUSIVE-TO-IKOU BUILT-IN DRAWER ORGANIZER
- ADJUSTABLE FEET
- COUNTERTOP PRE-DRILLED FOR SINGLE HOLE FAUCET
- PRE-ASSEMBLED VANITY

### SIZE OPTIONS

HEIGHT 34 3/4" | DEPTH 22"



### FINISHES



WHITE WHITE OAK ESPRESSO OAK

### HARDWARE



POLISHED CHROME

### COUNTERTOP



ENGINEERED STONE



# ELLIS

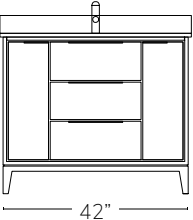
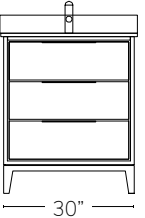
SHOWN IN WARM GREY | MATTE BLACK | 42" MODEL

### FEATURES

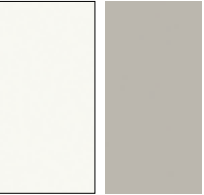
- SOLID HARDWOOD FRAME FOR DURABILITY
- SOFT-CLOSING DRAWER GLIDES
- SOFT-CLOSING CABINET DOORS
- EXCLUSIVE-TO-IKOU BUILT-IN DRAWER ORGANIZER
- COUNTERTOP PRE-DRILLED FOR SINGLE HOLE FAUCET
- PRE-ASSEMBLED VANITY

### SIZE OPTIONS

HEIGHT 34 3/4" | DEPTH 22"



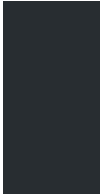
### FINISHES



WHITE

WARM  
GREY

### HARDWARE



MATTE  
BLACK

### COUNTERTOP



ENGINEERED  
STONE

# FAUCETS

USING ONLY THE FINEST MATERIALS, OUR LINE OF BATHROOM ACCESSORIES INCLUDING FAUCETS, SHOWER DOORS, MIRRORS, LIGHTING, AND TOILETS ARE DESIGNED WITH LONGEVITY IN MIND.



## RAVINE

SHOWN IN MATTE BLACK

### FEATURES

HEIGHT 5 3/4"



MATTE BLACK



POLISHED CHROME



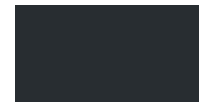


# KNURLING

SHOWN IN MATTE BLACK

## FEATURES

HEIGHT 9 7/16"



MATTE BLACK



POLISHED CHROME



# FONDA

## FEATURES

HEIGHT 7 9/16"



POLISHED CHROME



# KIRK

SHOWN IN MATTE BLACK

## FEATURES

HEIGHT 6 3/4"



BRUSHED STAINLESS STEEL



MATTE BLACK



# SAVILE

SHOWN IN BRUSHED NICKEL

## FEATURES

HEIGHT 6 1/2"



BRUSHED NICKEL

# SHOWER DOORS



USING ONLY THE FINEST MATERIALS, OUR LINE OF SHOWER DOORS FUSE DESIGN AND UTILITY SEAMLESSLY.

## NEXO

SHOWN IN MATTE BLACK

### FEATURES

- REQUIRED MINIMUM CURB WIDTH: 1 3/4"
- SINGLE SLIDING CONFIGURATION INCLUDES ONE SLIDING DOOR AND ANOTHER STATIONARY PANEL
- PREMIUM 3/8" (10MM) THICK
- SMOOTH ROLLER
- ADJUSTABLE WIDTH DOWN SIZE
- REVERSIBLE INSTALLATION FOR LEFT OR RIGHT-HAND ORIENTATION



MATTE BLACK BRUSHED NICKEL SATIN GOLD POLISHED CHROME



## BRIZA

SHOWN IN POLISHED STAINLESS

### FEATURES

- REQUIRED MINIMUM CURB WIDTH: 2 3/8"
- SINGLE SLIDING CONFIGURATION INCLUDES ONE SLIDING DOOR AND ANOTHER STATIONARY PANEL
- PREMIUM 3/8" (10MM) THICK
- SMOOTH ROLLER
- ADJUSTABLE WIDTH DOWN SIZE
- REVERSIBLE INSTALLATION FOR LEFT OR RIGHT-HAND ORIENTATION



MATTE BLACK POLISHED STAINLESS



# MIRRORS



ON-TREND AND PRACTICAL.



## BACKLIT PILL-SHAPED

### FEATURES

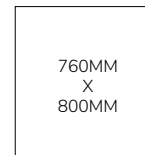
TOUCH SENSOR  
ANTI-FOG  
3000K/6000K



## BACKLIT RECTANGLE CABINET

### FEATURES

MOTION SENSOR  
3000K



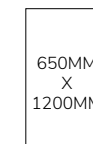
ALL CONFIGURATIONS: 145MM DEEP



## SINGLE VERTICAL BACKLIT RECTANGLE

### FEATURES

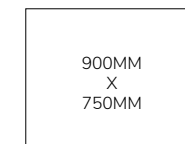
TOUCH SENSOR  
3000K



## HORIZONTAL BACKLIT RECTANGLE

### FEATURES

TOUCH SENSOR  
ANTI-FOG  
3000K/6000K





# LIGHTING

INNOVATIVE AND CHIC WITH TIMELESS FINISHES.



## TWO-LIGHT WALL SCONCE

SHOWN IN BRUSHED GOLD

### FEATURES

IRON & GLASS

DIMENSIONS: HEIGHT 400MM | DEPTH 150MM



BRUSHED NICKEL BRUSHED GOLD



## FLUTED GLASS WALL SCONCE

SHOWN IN BRUSHED GOLD

### FEATURES

IRON & CRYSTAL

DIMENSIONS: HEIGHT 410MM | DEPTH 120MM



BRUSHED NICKEL BRUSHED GOLD



## LINEAR WALL SCONCE

SHOWN IN BRUSHED GOLD

### FEATURES

IRON & ACRYLIC

DIMENSIONS: HEIGHT 600MM | DEPTH 50MM



BRUSHED NICKEL BRUSHED GOLD

# TOILETS



## TR-335

### FEATURES

ONE-PIECE TOILET  
FLUSHING SYSTEM: SIPHONIC  
S-TRAP: 300MM

DEPTH: 715MM  
WIDTH: 375MM  
HEIGHT: 755MM



## TR-511

### FEATURES

TWO-PIECE TOILET  
FLUSHING SYSTEM: SIPHONIC  
S-TRAP: 300MM

DEPTH: 750MM  
WIDTH: 445MM  
HEIGHT: 785MM



IKOU IS COMMITTED TO PRESERVING AND PROTECTING THE ENVIRONMENT. OUR RAW MATERIALS ARE ETHICALLY SOURCED, ENVIRONMENTALLY-FRIENDLY AND CARB 2 COMPLIANT. OUR VENDORS ARE COMMITTED TO PLANTING TREES IN PURSUIT OF A GREENER AND HEALTHIER PLANET.



# IKOU INC

AR+ BA+HE

*Studio*  
BA+HE | SPA  
BA+HE

URBAN  
BA+HE

IKOUIINC.COM

100 STEELCASE ROAD EAST | UNIT 101 | MARKHAM, ON L3R 1E8, CANADA